

Anti-SAP97 Rabbit Monoclonal Antibody
Catalog # ABO15879**Specification**

Anti-SAP97 Rabbit Monoclonal Antibody - Product Information

Application	WB
Primary Accession	Q12959
Host	Rabbit
Isotype	IgG
Reactivity	Rat, Human, Mouse
Clonality	Monoclonal
Format	Liquid

Description

Anti-SAP97 Rabbit Monoclonal Antibody . Tested in WB application. This antibody reacts with Human, Mouse, Rat.

Anti-SAP97 Rabbit Monoclonal Antibody - Additional Information

Gene ID 1739

Other Names

Disks large homolog 1, Synapse-associated protein 97, SAP-97, SAP97, hDlg, DLG1 (http://www.genenames.org/cgi-bin/gene_symbol_report?hgnc_id=2900)
HGNC:2900

Calculated MW

130 kDa KDa

Application Details

WB 1:500-1:2000

Contents

Rabbit IgG in phosphate buffered saline, pH 7.4, 150mM NaCl, 0.02% sodium azide and 50% glycerol, 0.4-0.5mg/ml BSA.

Immunogen

A synthesized peptide derived from human SAP97

Purification

Affinity-chromatography

Storage

Store at -20°C for one year. For short term storage and frequent use, store at 4°C for up to one month. Avoid repeated freeze-thaw cycles.

Anti-SAP97 Rabbit Monoclonal Antibody - Protein Information

Name DLG1 ([HGNC:2900](#))

Function

Essential multidomain scaffolding protein required for normal development (By similarity). Recruits channels, receptors and signaling molecules to discrete plasma membrane domains in polarized cells. Promotes epithelial cell layer barrier function via maintaining cell- cell adhesion (By similarity). May also play a role in adherens junction assembly, signal transduction, cell proliferation, synaptogenesis and lymphocyte activation. Regulates the excitability of cardiac myocytes by modulating the functional expression of Kv4 channels. Functional regulator of Kv1.5 channel. During long-term depression in hippocampal neurons, it recruits ADAM10 to the plasma membrane (PubMed:23676497).

Cellular Location

Cell membrane; Peripheral membrane protein. Basolateral cell membrane. Endoplasmic reticulum membrane {ECO:0000250|UniProtKB:Q62696}. Postsynaptic density {ECO:0000250|UniProtKB:Q62696}. Synapse {ECO:0000250|UniProtKB:Q62696} Cell membrane, sarcolemma. Apical cell membrane. Cell junction. Cytoplasm Note=Colocalizes with EPB41 at regions of intercellular contacts Basolateral in epithelial cells (PubMed:12807908). May also associate with endoplasmic reticulum membranes. Mainly found in neurons soma, moderately found at postsynaptic densities (By similarity) {ECO:0000250|UniProtKB:Q62696, ECO:0000269|PubMed:10859302, ECO:0000269|PubMed:12807908, ECO:0000269|PubMed:8922391, ECO:0000269|PubMed:9192623}

Tissue Location

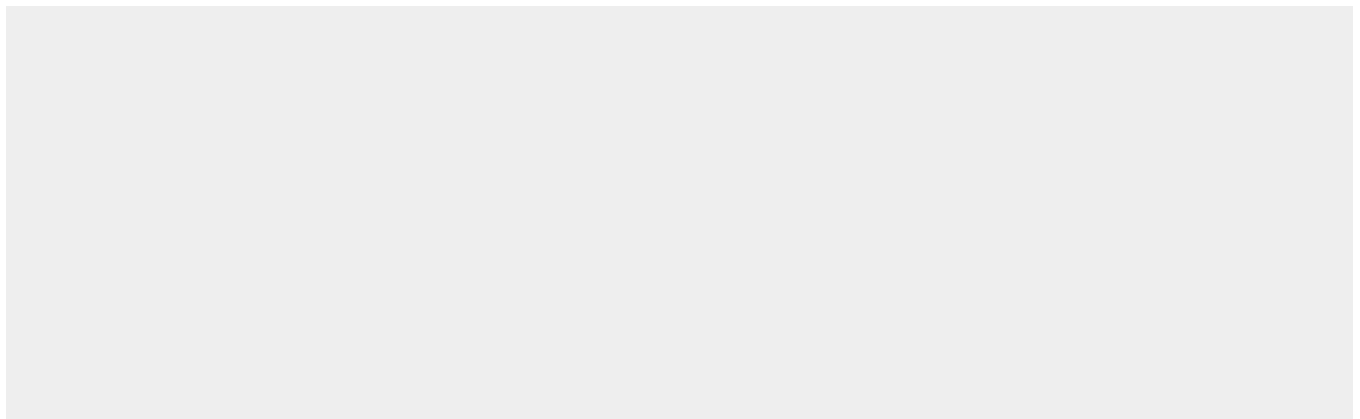
Abundantly expressed in atrial myocardium (at protein level). Expressed in lung fibroblasts, cervical epithelial and B-cells (at protein level). Expressed in the brain (at protein level) (PubMed:23676497). Widely expressed, with isoforms displaying different expression profiles.

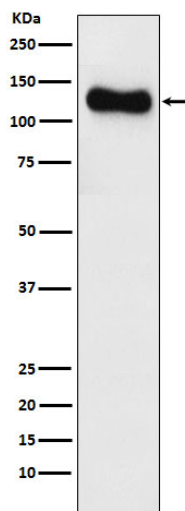
Anti-SAP97 Rabbit Monoclonal Antibody - Protocols

Provided below are standard protocols that you may find useful for product applications.

- [Western Blot](#)
- [Blocking Peptides](#)
- [Dot Blot](#)
- [Immunohistochemistry](#)
- [Immunofluorescence](#)
- [Immunoprecipitation](#)
- [Flow Cytometry](#)
- [Cell Culture](#)

Anti-SAP97 Rabbit Monoclonal Antibody - Images





Western blot analysis of SAP97 expression in SH-SY5Y cell lysate.